

inscena



***inscena***

*The winning project of the 2019 VerdiOff “Call to artists”*



*Realized by:*

Arch. Ferrari Ilaria

Arch. Garulli Francesco

Arch. Valcavi Laura

Arch. Zanichelli Annalisa

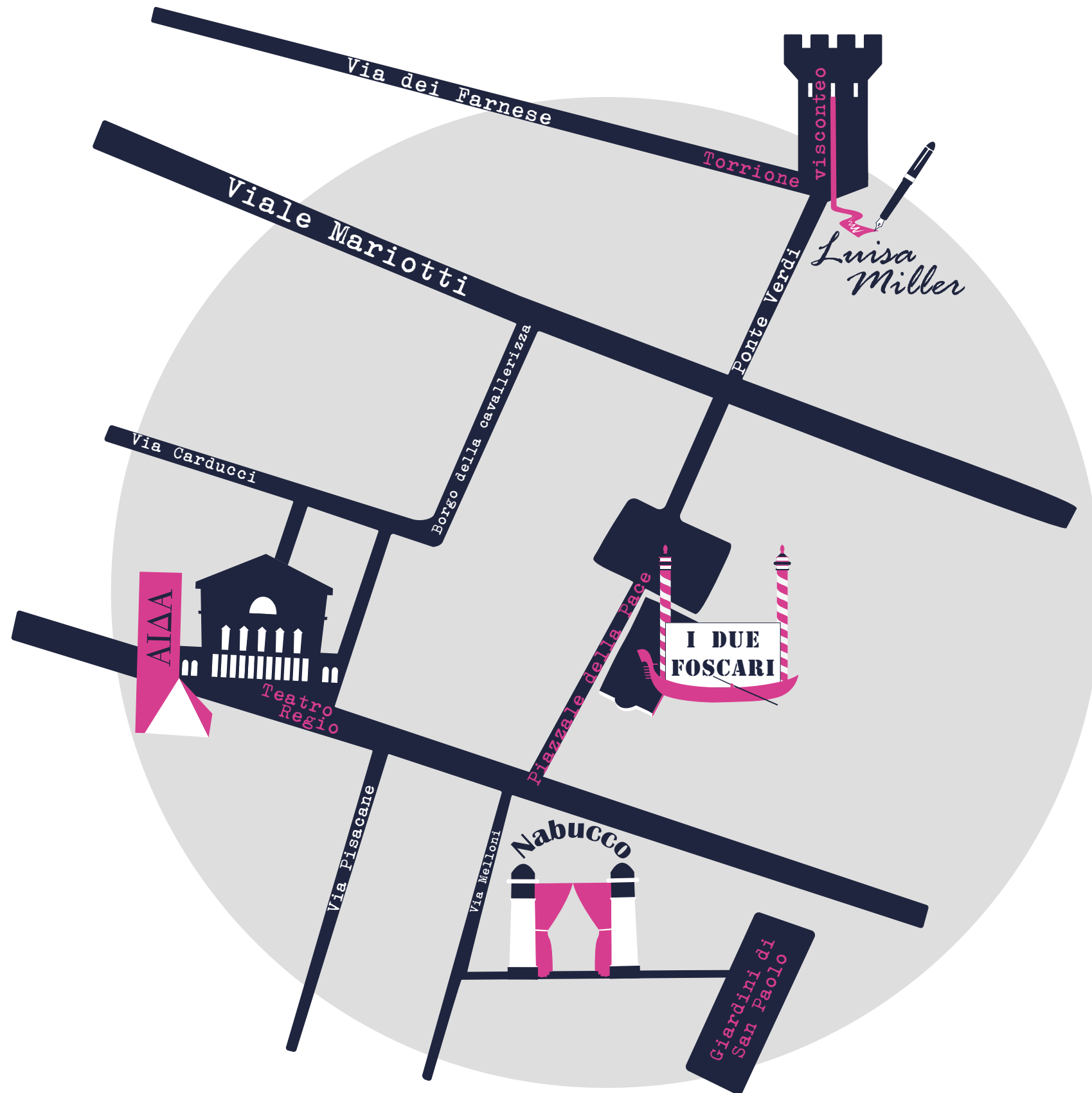
**Translated by Silvia Vignali**

*Under the patronage of:*





# Parma *inscena*



At the heart of the four art installations designed for the 2019 VerdiOff “*Call to artists*” are the *locations*: Parma’s most symbolic architectures that evoke the operas’ settings. VerdiOff and Festival Verdi’s peculiar use of colors lures the forgetful passers-by into living this experience first hand.

Therefore, these actual locations metaphorically turn into theatre sketches and stages to perform on, just like they were beautiful open-air shows. The music, the scripts, the interviews and the plots’ analyses all contribute to the final *mise en scène*.

*Locations inside other locations*, which assume a brand new significance through the deep interaction with the locals (*the actors*) and their active participation to the operas (*plots*) in unconventional ways.

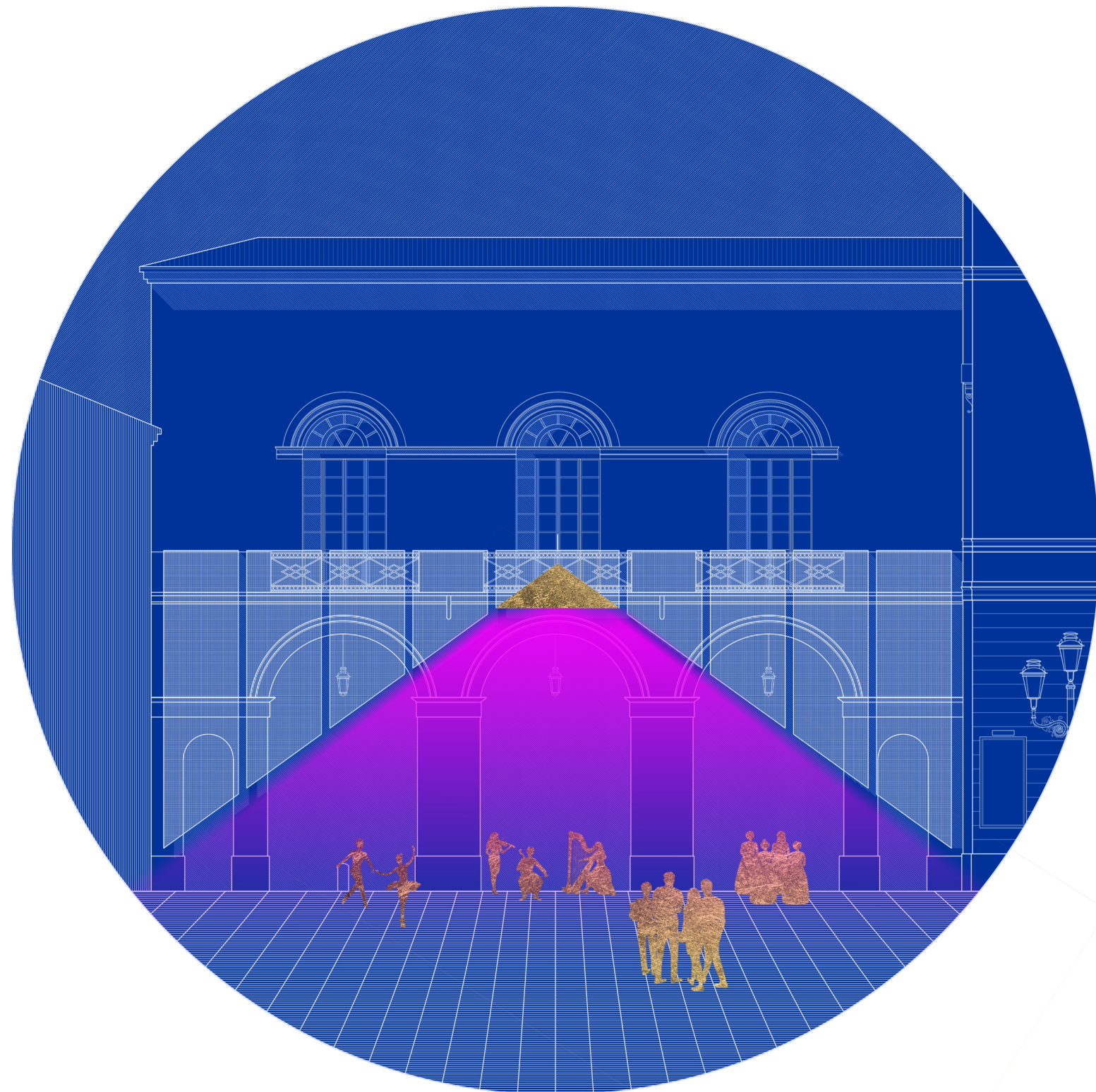
To each location one opera, and to each opera a different form of expression, which slowly reveals small pieces of it. From singing to reading excerpts from the libretto. From the projection of short sentences, to playing the music.

This constant *dichotomy between the actual location and the dreamed location*, between operas and expressive language results into a *chromatic dualism* between day and night. At daytime the four art installations are dipped in blue, but at nighttime the light turns magenta and the beguiling atmosphere alters the shapes of the installations, thus changing the scenery.

*Four locations, four sceneries, four operas* that become a living and vivid part of the city: from September 21st to October 20th VerdiOff is “*inscena*”.

# Aida

📍 Teatro Regio



The outline of an imposing *pyramid* is the strong and emblematic picture that best represents *Aida*, according to people's imagination.

The actual location chosen to represent this metaphoric location where history combines with mystery had to be *Teatro Regio*: a real sanctuary of music and culture, able to cut the ribbons of the path towards the discovery of Festival Verdi's operas.

A *blue tulle curtain* surrounds the arcades of the left fornix. It extends from the balcony to the fornix itself, assuming in its negative the shape of a pyramid, which will turn magenta at dusk.

Over the pyramid, the “*Cucù verdiano*” will take place everyday at 1 PM, when the art installation hosts a singer, performing one of Verdi's compositions from the balcony of the fornix, which in turn will serve as stage.

The audience will thus be seduced by the majesty of the pyramid and the magic of the singing. More information on the opera and on “*inscena*” project is available on the information dashboard.







# Nabucco

📍 Giardini di San Paolo

The legendary hanging gardens of Babylon, a wonder of the ancient world, bring *Nabucco* back to our mind.

The area chosen to embody the genius loci is the entrance gate of the small, tranquil and ancient *San Paolo Garden*.

Two blue cloths in tulle veil the doors of the gate and the golden sign “*Va pensiero*” stands right above. It pays tribute to the choral singing of the oppressed people of Israel, who made the opera famous. It also recalls the regrettably famous expression “*Arbeit macht frei*” from the Auschwitz prison camp.

It will resonate everyday at three different times and at night the magical and alienating light will allow the unaware passers-by to dive into a *dreamlike world*. In this slippery dimension, freedom has nothing to do with the chaos of the city and it has to be enjoyed before oppression drags them inside the opulent Babylonia once again.



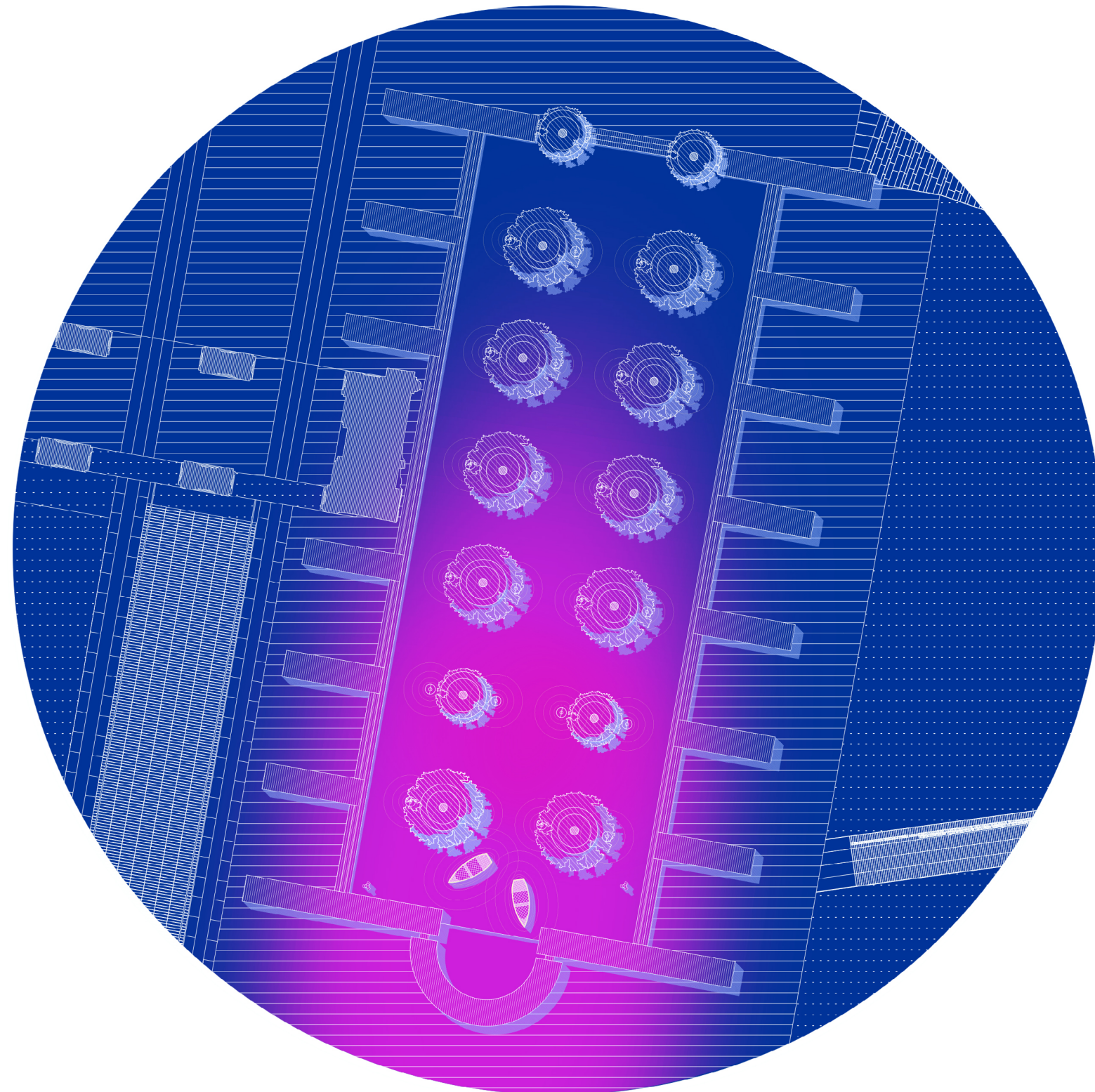






# I due Foscari

📍 Piazzale della Pace



The metaphorical location of the opera “*I due Foscari*” is intrinsically linked to the place where the story takes place: *Venice*, land of melancholy and exile.

The essence of the Serenissima lives in the historic center of Parma, more precisely at the heart of Pilotta: in the *fountain of San Pietro Martire*.

For their shapes and intentions, the water tanks call to mind the cathedral destroyed during the war bombings.

These tanks serve as the ideal scenery for the blue and silent ships that are the protagonists of this installation.

In the beloved yet coveted Venice, the feelings of *desperate captivity* and *lightness* of memories surround the two ships and create an *evocative fusion between poetry and picture*. It culminates at sunset, when the warm magenta nuance lights the atmosphere up, shedding light from the ripples of the water to the crown of the trees outlining the tank.

Qr codes on the information dashboard are provided in order to create the perfect soundtrack to the light show of this installation and contribute to a magical music polyphony. This way, the Venice of “I Due Foscari” is recreated in Parma.







# Luisa Miller

📍 **Torrione visconteo**



*Luisa Miller* metaphorical location is that of a romantic and fairy-tale castle, protector of secret passions, treasons and mysteries.

The *torrione visconteo*, a medieval tower standing on the banks of river Parma, close to Palazzo della Pilotta, evokes the exact same atmosphere and becomes its perfect scenery.

The blue “*Letter to*” banner outlining the tower invites the passers-by to become the protagonists and stresses the main topic of Luisa Miller (*the letter*).

Luisa Miller’s poetry, writing and plot represent the core of this installation.

At dusk, the phrase “*Vieni, ed insieme fuggirem*” taken from Luisa Miller letter and written also on the blue cloth nearby, is projected on the walls of the tower. The colors light up in order to catch the eye of the audience from beyond river Parma.





LETTER  
TO

*Vieni,  
ed insieme  
fuggirem*

inscena